

Lower Thames Crossing

6.2 Environmental Statement Figures

Figure 6.6 - Representative Heritage Viewpoints (1 of 2)

APFP Regulation 5(2)(a)
Infrastructure Planning
(Applications: Prescribed Forms and Procedure)
Regulations 2009
Volume 6

DATE: October 2022

Planning Inspectorate Scheme Ref: TR010032
Application Document Ref: TR010032/APP/6.2

VERSION: 1.0



Rev	Status	Rev. Date	Purpose of revision	Drawn	Chck'd	Apprv'd
P01	S8	12/09/2022	First Issued	BB	DL	CD

For location see Figure 7.16 - Visual Effects Drawing with Representative Viewpoint Locations

Camera: Canon EOS 6D MkII
 Lens: Canon EF 50mm f/1.8 STM
 Equipment: Manfrotto MA 454 Micro Positioning Plate
 Manfrotto SBH-100 Ball Head

Upper Viewpoint (Summer): N-(CH)01
 Date and Time: 03/07/2019 06:42

FL, Max Aperture: 50mm, 1.75
 Tripod Height: 1.5m
 Viewpoint Ground Height: 16.5m AOD
 Viewpoint Grid Reference: 565170E, 175462N

Lower Viewpoint (Summer): N-(CH)02
 Date and Time: 03/07/2019 06:50

FL, Max Aperture: 50mm, 1.75
 Tripod Height: 1.5m
 Viewpoint Ground Height: 24.3m AOD
 Viewpoint Grid Reference: 565179E, 175400N

Distance to Order Limits: 590m
 View Direction: (Centre of View): ENE
 GPS Accuracy: 5m

Distance to Order Limits: 585m
 View Direction: (Centre of View): N
 GPS Accuracy: 5m



LOWER THAMES CROSSING
 5th Floor Beaufort House
 15 St Botolph Street
 London EC3A 7DT

Project: LOWER THAMES CROSSING
 Drawing title: Figure 6.6
 Representative Viewpoints - Summer View
 Heritage Viewpoint N-(CH)01 & N-(CH)02
 Sheet 1 of 2

Drawn	BB	Date - 12/09/2022	Status	Revision
Checked	DL	Date - 12/09/2022	S8	P01
Approved	CD	Date - 12/09/2022	Application Document No. TR010032/APP/6.2	
Drawing number HE540039-CJV-ELS-SZP_ZZ000000_Z-DR-LV-00196				



P01	S8	12/09/2022	First Issued	BB	DL	CD
Rev	Status	Rev. Date	Purpose of revision	Drawn	Chck'd	Apprv'd

For location see Figure 7.16 - Visual Effects Drawing with Representative Viewpoint Locations

Camera: Canon EOS 6D MkII
 Lens: Canon EF 50mm f/1.8 STM
 Equipment: Manfrotto MA 454 Micro Positioning Plate
 Manfrotto SBH-100 Ball Head

Upper Viewpoint (Summer): N-(CH)01
 Date and Time: 03/07/2019 06:42

FL, Max Aperture: 50mm, 1.75
 Tripod Height: 1.5m
 Viewpoint Ground Height: 16.5m AOD
 Viewpoint Grid Reference: 565170E, 175462N

Lower Viewpoint (Summer): N-(CH)02
 Date and Time: 03/07/2019 06:50

FL, Max Aperture: 50mm, 1.75
 Tripod Height: 1.5m
 Viewpoint Ground Height: 24.3m AOD
 Viewpoint Grid Reference: 565079E, 175400N

Client

national highways

LOWER THAMES CROSSING

5th Floor Beaufort House
 15 St Botolph Street
 London EC3A 7DT

Project LOWER THAMES CROSSING

Drawing title Figure 6.6
 Representative Viewpoints - Summer View
 Heritage Viewpoint N-(CH)01 & N-(CH)02
 Sheet 2 of 2

Drawn	BB	Date - 12/09/2022	Status	Revision
Checked	DL	Date - 12/09/2022	S8	P01
Approved	CD	Date - 12/09/2022	Application Document No. TR010032/APP/6.2	
Drawing number				
HE540039-CJV-ELS-SZP_ZZ000000_Z-DR-LV-00197				



P01	S8	12/09/2022	First Issued	BB	DL	CD
Rev	Status	Rev. Date	Purpose of revision	Drawn	Chck'd	Apprv'd

For location see Figure 7.16 - Visual Effects Drawing with Representative Viewpoint Locations

Camera: Canon EOS 6D MkII
 Lens: Canon EF 50mm f/1.8 STM
 Equipment: Manfrotto MA 454 Micro Positioning Plate
 Manfrotto SBH-100 Ball Head

Upper Viewpoint (Summer): N-(CH)03
 Date and Time: 03/07/2019 07:01

FL, Max Aperture: 50mm, 1.75
 Tripod Height: 1.5m
 Viewpoint Ground Height: 38.1m AOD
 Viewpoint Grid Reference: 564974E, 175241N

Lower Viewpoint (Summer): N-(CH)04
 Date and Time: 03/07/2019 07:12

FL, Max Aperture: 50mm, 1.75
 Tripod Height: 1.5m
 Viewpoint Ground Height: 51.4m AOD
 Viewpoint Grid Reference: 564857E, 175219N

Client

LOWER THAMES CROSSING
 5th Floor Beaufort House
 15 St Botolph Street
 London EC3A 7DT

Project
 LOWER THAMES CROSSING

Drawing title
 Figure 6.6
 Representative Viewpoints - Summer View
 Heritage Viewpoint N-(CH)03 & N-(CH)04
 Sheet 1 of 2

Drawn	BB	Date - 12/09/2022	Status	Revision
Checked	DL	Date - 12/09/2022	S8	P01
Approved	CD	Date - 12/09/2022	Application Document No. TR010032/APP/6.2	
Drawing number HE540039-CJV-ELS-SZP_ZZ000000_Z-DR-LV-00198				



P01	S8	12/09/2022	First Issued	BB	DL	CD
Rev	Status	Rev. Date	Purpose of revision	Drawn	Chck'd	Apprv'd

For location see Figure 7.16 - Visual Effects Drawing with Representative Viewpoint Locations

Camera: Canon EOS 6D MkII
 Lens: Canon EF 50mm f/1.8 STM
 Equipment: Manfrotto MA 454 Micro Positioning Plate
 Manfrotto SBH-100 Ball Head

Upper Viewpoint (Summer): N-(CH)03
 Date and Time: 03/07/2019 07:12

FL, Max Aperture: 50mm, 1.75
 Tripod Height: 1.5m
 Viewpoint Ground Height: 38.1m AOD
 Viewpoint Grid Reference: 564974E, 175441N

Lower Viewpoint (Summer): N-(CH)04
 Date and Time: 03/07/2019 07:12

FL, Max Aperture: 50mm, 1.75
 Tripod Height: 1.5m
 Viewpoint Ground Height: 51.4m AOD
 Viewpoint Grid Reference: 564857E, 175219N

Distance to Order Limits: 490m
 View Direction: N
 (Centre of View):
 GPS Accuracy: 5m



LOWER THAMES CROSSING
 5th Floor Beaufort House
 15 St Botolph Street
 London EC3A 7DT

Project: LOWER THAMES CROSSING
 Drawing title: Figure 6.6
 Representative Viewpoints - Summer View
 Heritage Viewpoint N-(CH)03 & N-(CH)04
 Sheet 2 of 2

Drawn	BB	Date - 12/09/2022	Status	Revision
Checked	DL	Date - 12/09/2022	S8	P01
Approved	CD	Date - 12/09/2022	Application Document No. TR010032/APP/6.2	
Drawing number HE540039-CJV-ELS-SZP_ZZ000000_Z-DR-LV-00199				



Rev	Status	Rev. Date	Purpose of revision	Drawn	Chk'd	Apprv'd
P01	S8	12/09/2022	First Issued	BB	DL	CD

For location see Figure 7.16 - Visual Effects Drawing with Representative Viewpoint Locations

Camera: Canon EOS 6D MkII
 Lens: Canon EF 50mm f/1.8 STM
 Equipment: Manfrotto MA 454 Micro Positioning Plate
 Manfrotto SBH-100 Ball Head

Upper Viewpoint (Summer): N-(CH)05
 Date and Time: 03/07/2019 05:44

FL, Max Aperture: 50mm, 1.75
 Tripod Height: 1.65m
 Viewpoint Ground Height: 7.9m AOD
 Viewpoint Grid Reference: 564832E, 175633N

Lower Viewpoint (Summer): N-(CH)06
 Date and Time: 03/07/2019 06:01

FL, Max Aperture: 50mm, 1.75
 Tripod Height: 1.5m
 Viewpoint Ground Height: 13.2m AOD
 Viewpoint Grid Reference: 565082E, 175660N



LOWER THAMES CROSSING
 5th Floor Beaufort House
 15 St Botolph Street
 London EC3A 7DT

Project: LOWER THAMES CROSSING
 Drawing title: Figure 6.6
 Representative Viewpoints - Summer View
 Heritage Viewpoint N-(CH)05 & N-(CH)06
 Sheet 1 of 2

Drawn	BB	Date - 12/09/2022	Status	Revision
Checked	DL	Date - 12/09/2022	S8	P01
Approved	CD	Date - 12/09/2022	Application Document No. TR010032/APP/6.2	
Drawing number HE540039-CJV-ELS-SZP_ZZ000000_Z-DR-LV-00200				



Rev	Status	Rev. Date	Purpose of revision	Drawn	Chck'd	Apprv'd
P01	S8	12/09/2022	First Issued	BB	DL	CD

For location see Figure 7.16 - Visual Effects Drawing with Representative Viewpoint Locations

Camera: Canon EOS 6D MkII
 Lens: Canon EF 50mm f/1.8 STM
 Equipment: Manfrotto MA 454 Micro Positioning Plate
 Manfrotto SBH-100 Ball Head

Upper Viewpoint (Summer): N-(CH)05
 Date and Time: 03/07/2019 05:44

FL, Max Aperture: 50mm, 1.75
 Tripod Height: 1.65m
 Viewpoint Ground Height: 7.9m AOD
 Viewpoint Grid Reference: 564832E, 175633N

Distance to Order Limits: 255m
 View Direction: (Centre of View): ENE
 GPS Accuracy: 5m

Lower Viewpoint (Summer): N-(CH)06
 Date and Time: 03/07/2019 06:01

FL, Max Aperture: 50mm, 1.75
 Tripod Height: 1.5m
 Viewpoint Ground Height: 13.2m AOD
 Viewpoint Grid Reference: 564832E, 175630N

Distance to Order Limits: 215m
 View Direction: (Centre of View): SE
 GPS Accuracy: 5m



LOWER THAMES CROSSING
 5th Floor Beaufort House
 15 St Botolph Street
 London EC3A 7DT

Project: LOWER THAMES CROSSING
 Drawing title: Figure 6.6
 Representative Viewpoints - Summer View
 Heritage Viewpoint N-(CH)05 & N-(CH)06
 Sheet 2 of 2

Drawn	BB	Date - 12/09/2022	Status	Revision
Checked	DL	Date - 12/09/2022	S8	P01
Approved	CD	Date - 12/09/2022	Application Document No. TR010032/APP/6.2	
Drawing number: HE540039-CJV-ELS-SZP_ZZ000000_Z-DR-LV-00201				



Rev	Status	Rev. Date	Purpose of revision	Drawn	Chck'd	Apprv'd
P01	S8	12/09/2022	First Issued	BB	DL	CD

For location see Figure 7.16 - Visual Effects Drawing with Representative Viewpoint Locations

Camera: Canon EOS 6D MkII
 Lens: Canon EF 50mm f/1.8 STM
 Equipment: Manfrotto MA 454 Micro Positioning Plate
 Manfrotto SBH-100 Ball Head

Upper Viewpoint (Summer): N-(CH)07
 Date and Time: 06/06/2019 12:21

FL, Max Aperture: 50mm, 1.75
 Tripod Height: 1.5m
 Viewpoint Ground Height: 0.1m AOD
 Viewpoint Grid Reference: 565826E, 177715N

Distance to Order Limits: 30m
 View Direction (Centre of View): SSW
 GPS Accuracy: 5m

Lower Viewpoint (Winter): N-(CH)08
 Date and Time: 18/02/2019 13:58

FL, Max Aperture: 50mm, 1.75
 Tripod Height: 1.5m
 Viewpoint Ground Height: 6.1m AOD
 Viewpoint Grid Reference: 567740E, 177034N

Distance to Order Limits: 0m
 View Direction (Centre of View): W
 GPS Accuracy: 5m



Client

LOWER THAMES CROSSING
 5th Floor Beaufort House
 15 St Botolph Street
 London EC3A 7DT

Project

LOWER THAMES CROSSING

Drawing title

Figure 6.6
 Representative Viewpoints - Summer & Winter View
 Heritage Viewpoint N-(CH)07 & N-(CH)08
 Sheet 1 of 2

Drawn	BB	Date - 12/09/2022	Status	Revision
Checked	DL	Date - 12/09/2022	S8	P01
Approved	CD	Date - 12/09/2022	Application Document No. TR010032/APP/6.2	
Drawing number				
HE540039-CJV-ELS-SZP_ZZ000000_Z-DR-LV-00202				



PHOTO FRAME INTENTIONALLY BLANK

Rev	Status	Rev. Date	Purpose of revision	Drawn	Chck'd	Apprv'd
P01	S8	12/09/2022	First Issued	BB	DL	CD

For location see Figure 7.16 - Visual Effects Drawing with Representative Viewpoint Locations

Camera: Canon EOS 6D MkII
 Lens: Canon EF 50mm f/1.8 STM
 Equipment: Manfrotto MA 454 Micro Positioning Plate
 Manfrotto SBH-100 Ball Head

Upper Viewpoint (Summer): N-(CH)07
 Date and Time: 06/06/2019 12:21

FL, Max Aperture: 50mm, 1.75
 Tripod Height: 1.5m
 Viewpoint Ground Height: 0.1m AOD
 Viewpoint Grid Reference: 565826E, 177715N

Distance to Order Limits: 30m
 View Direction (Centre of View): SSW
 GPS Accuracy: 5m

Lower Viewpoint (Winter): N-(CH)08
 Date and Time: 18/02/2019 13:58

FL, Max Aperture: 50mm, 1.75
 Tripod Height: 1.5m
 Viewpoint Ground Height: 6.1m AOD
 Viewpoint Grid Reference: 567740E, 177034N

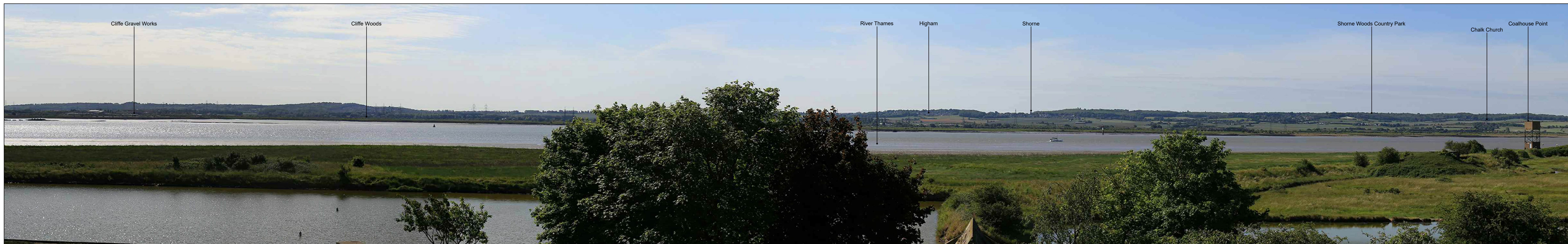
Distance to Order Limits: 0m
 View Direction (Centre of View): W
 GPS Accuracy: 5m



LOWER THAMES CROSSING
 5th Floor Beaufort House
 15 St Botolph Street
 London EC3A 7DT

Project: LOWER THAMES CROSSING
 Drawing title: Figure 6.6
 Representative Viewpoints - Summer View
 Heritage Viewpoint N-(CH)07 & N-(CH)08
 Sheet 2 of 2

Drawn	BB	Date - 12/09/2022	Status	S8	Revision	P01
Checked	DL	Date - 12/09/2022	Application Document No. TR010032/APP/6.2			
Approved	CD	Date - 12/09/2022	Drawing number			
HE540039-CJV-ELS-SZP_ZZ000000_Z-DR-LV-00203						



Rev	Status	Rev. Date	Purpose of revision	Drawn	Chk'd	Apprv'd
P01	S8	12/09/2022	First Issued	BB	DL	CD

For location see Figure 7.16 - Visual Effects Drawing with Representative Viewpoint Locations

Camera: Canon EOS 6D MkII
 Lens: Canon EF 50mm f/1.8 STM
 Equipment: Manfrotto MA 454 Micro Positioning Plate
 Manfrotto SBH-100 Ball Head

Upper Viewpoint (Summer): N-(CH)09
 Date and Time: 14/06/2022 08:24

FL, Max Aperture: 50mm, 1.75
 Tripod Height: 1.5m
 Viewpoint Ground Height: 17.4m AOD
 Viewpoint Grid Reference: 569093E, 176330N

Distance to Order Limits: 185m
 View Direction (Centre of View): SSW
 GPS Accuracy: 5m

Lower Viewpoint (Summer): N-(CH)10
 Date and Time: 03/06/2019 10:26

FL, Max Aperture: 50mm, 1.75
 Tripod Height: 1.5m
 Viewpoint Ground Height: 1.8m AOD
 Viewpoint Grid Reference: 568975E, 176330N

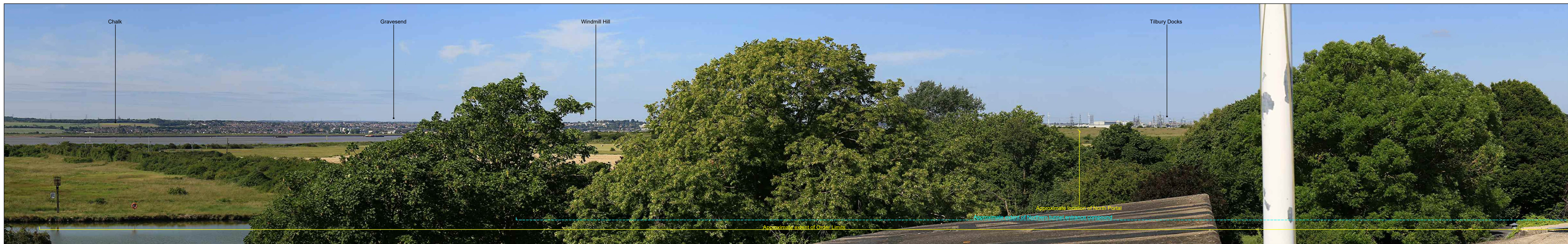
Distance to Order Limits: 60m
 View Direction (Centre of View): SW
 GPS Accuracy: 5m



LOWER THAMES CROSSING
 5th Floor Beaufort House
 15 St Botolph Street
 London EC3A 7DT

Project: LOWER THAMES CROSSING
 Drawing title: Figure 6.6
 Representative Viewpoints - Summer View
 Heritage Viewpoint N-(CH)09 & N-(CH)10
 Sheet 1 of 3

Drawn	BB	Date - 12/09/2022	Status	Revision
Checked	DL	Date - 12/09/2022	S8	P01
Approved	CD	Date - 12/09/2022	Application Document No. TR010032/APP/6.2	
Drawing number HE540039-CJV-ELS-SZP_ZZ000000_Z-DR-LV-00204				



Rev	Status	Rev. Date	Purpose of revision	Drawn	Chck'd	Apprv'd
P01	S8	12/09/2022	First Issued	BB	DL	CD

For location see Figure 7.16 - Visual Effects Drawing with Representative Viewpoint Locations

Camera: Canon EOS 6D MkII
 Lens: Canon EF 50mm f/1.8 STM
 Equipment: Manfrotto MA 454 Micro Positioning Plate
 Manfrotto SBH-100 Ball Head

Upper Viewpoint (Summer): N-(CH)09
 Date and Time: 14/06/2022 08:24

FL, Max Aperture: 50mm, 1.75
 Tripod Height: 1.5m
 Viewpoint Ground Height: 17.4m AOD
 Viewpoint Grid Reference: 569093E, 176736N

Lower Viewpoint (Summer): N-(CH)10
 Date and Time: 03/06/2019 10:26

FL, Max Aperture: 50mm, 1.75
 Tripod Height: 1.5m
 Viewpoint Ground Height: 1.8m AOD
 Viewpoint Grid Reference: 568975E, 176730N

Distance to Order Limits: 185m
 View Direction (Centre of View): SSW
 GPS Accuracy: 5m

Distance to Order Limits: 60m
 View Direction (Centre of View): SW
 GPS Accuracy: 5m



Client

LOWER THAMES CROSSING
 5th Floor Beaufort House
 15 St Botolph Street
 London EC3A 7DT

Project

LOWER THAMES CROSSING

Drawing title

Figure 6.6
 Representative Viewpoints - Summer View
 Heritage Viewpoint N-(CH)09 & N-(CH)10
 Sheet 2 of 3

Drawn	BB	Date - 12/09/2022	Status	Revision
Checked	DL	Date - 12/09/2022	S8	P01
Approved	CD	Date - 12/09/2022	Application Document No. TR010032/APP/6.2	
Drawing number				
HE540039-CJV-ELS-SZP_ZZ000000_Z-DR-LV-00205				



PHOTO FRAME INTENTIONALLY BLANK

Rev	Status	Rev. Date	Purpose of revision	Drawn	Chck'd	Apprv'd
P01	S8	12/09/2022	First Issued	BB	DL	CD

For location see Figure 7.16 - Visual Effects Drawing with Representative Viewpoint Locations

Camera: Canon EOS 6D MkII
 Lens: Canon EF 50mm f/1.8 STM
 Equipment: Manfrotto MA 454 Micro Positioning Plate
 Manfrotto SBH-100 Ball Head

Upper Viewpoint (Summer): N-(CH)09
 Date and Time: 14/06/2022 08:24

FL, Max Aperture: 50mm, 1.75
 Tripod Height: 1.5m
 Viewpoint Ground Height: 17.4m AOD
 Viewpoint Grid Reference: 569093E, 176768N

Distance to Order Limits: 185m
 View Direction (Centre of View): SSW
 GPS Accuracy: 5m

Lower Viewpoint (Summer): N-(CH)10
 Date and Time: 03/06/2019 10:26

FL, Max Aperture: 50mm, 1.75
 Tripod Height: 1.5m
 Viewpoint Ground Height: 1.8m AOD
 Viewpoint Grid Reference: 568975E, 176330N

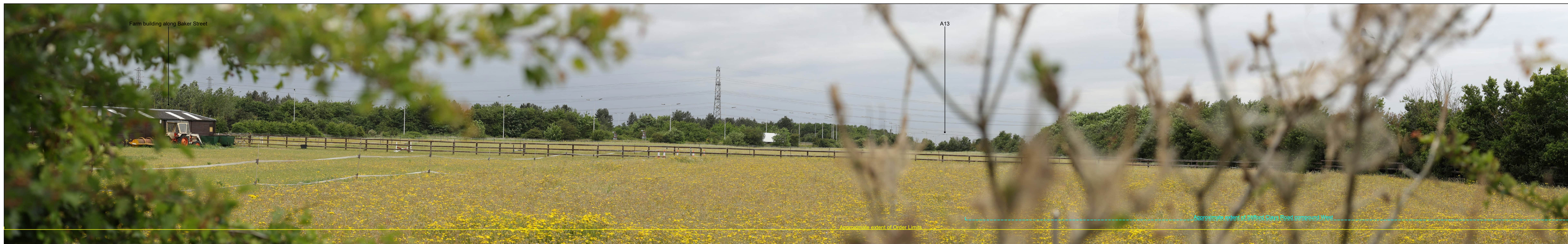
Distance to Order Limits: 60m
 View Direction (Centre of View): SW
 GPS Accuracy: 5m



LOWER THAMES CROSSING
 5th Floor Beaufort House
 15 St Botolph Street
 London EC3A 7DT

Project: LOWER THAMES CROSSING
 Drawing title: Figure 6.6
 Representative Viewpoints - Summer View
 Heritage Viewpoint N-(CH)09
 Sheet 3 of 3

Drawn	BB	Date - 12/09/2022	Status	S8	Revision	P01
Checked	DL	Date - 12/09/2022	Application Document No.	TR010032/APP/6.2		
Approved	CD	Date - 12/09/2022	Drawing number	HE540039-CJV-ELS-SZP_ZZ000000_Z-DR-LV-00206		



P01	S8	12/09/2022	First Issued	BB	DL	CD
Rev	Status	Rev. Date	Purpose of revision	Drawn	Chck'd	Apprv'd

For location see Figure 7.16 - Visual Effects Drawing with Representative Viewpoint Locations

Camera: Canon EOS 6D MkII
 Lens: Canon EF 50mm f/1.8 STM
 Equipment: Manfrotto MA 454 Micro Positioning Plate
 Manfrotto SBH-100 Ball Head

Upper Viewpoint (Summer): N-(CH)11
 Date and Time: 04/06/2019 11:30

FL, Max Aperture: 50mm, 1.75
 Tripod Height: 1.5m
 Viewpoint Ground Height: 31m AOD
 Viewpoint Grid Reference: 563430E, 181199N

Distance to Order Limits: 11m
 View Direction (Centre of View): SW
 GPS Accuracy: 5m

Lower Viewpoint (Summer): N-(CH)12
 Date and Time: 04/06/2019 11:09

FL, Max Aperture: 50mm, 1.75
 Tripod Height: 1.5m
 Viewpoint Ground Height: 21.8m AOD
 Viewpoint Grid Reference: 562247E, 180911N

Distance to Order Limits: 0m
 View Direction (Centre of View): ENE
 GPS Accuracy: 5m



LOWER THAMES CROSSING
 5th Floor Beaufort House
 15 St Botolph Street
 London EC3A 7DT

Project: LOWER THAMES CROSSING
 Drawing title: Figure 6.6
 Representative Viewpoints - Summer View
 Heritage Viewpoint N-(CH)11 & N-(CH)12
 Sheet 1 of 2

Drawn	BB	Date - 12/09/2022	Status	Revision
Checked	DL	Date - 12/09/2022	S8	P01
Approved	CD	Date - 12/09/2022	Application Document No. TR010032/APP/6.2	
Drawing number HE540039-CJV-ELS-SZP_ZZ000000_Z-DR-LV-00207				

PHOTO FRAME INTENTIONALLY BLANK



Approximate extent of Order Limits

P01	S8	12/09/2022	First Issued	BB	DL	CD
Rev	Status	Rev. Date	Purpose of revision	Drawn	Chck'd	Apprv'd

For location see Figure 7.16 - Visual Effects Drawing with Representative Viewpoint Locations

Camera: Canon EOS 6D MkII
 Lens: Canon EF 50mm f/1.8 STM
 Equipment: Manfrotto MA 454 Micro Positioning Plate
 Manfrotto SBH-100 Ball Head

Upper Viewpoint (Summer): N-(CH)11
 Date and Time: 04/06/2019 11:30

FL, Max Aperture: 50mm, 1.75
 Tripod Height: 1.5m
 Viewpoint Ground Height: 31m AOD
 Viewpoint Grid Reference: 563430E, 181199N

Distance to Order Limits: 11m
 View Direction (Centre of View): SW
 GPS Accuracy: 5m

Lower Viewpoint (Summer): N-(CH)12
 Date and Time: 04/06/2019 11:09

FL, Max Aperture: 50mm, 1.75
 Tripod Height: 1.5m
 Viewpoint Ground Height: 21.8m AOD
 Viewpoint Grid Reference: 562247E, 180911N

Distance to Order Limits: 0m
 View Direction (Centre of View): ENE
 GPS Accuracy: 5m



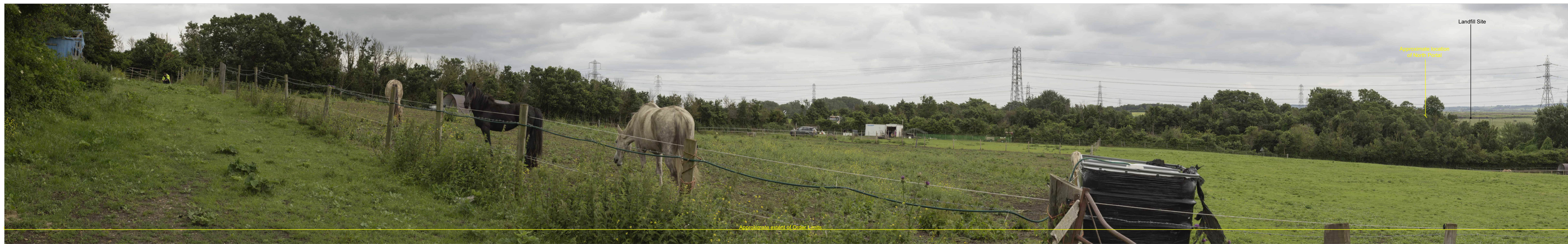
Client

LOWER THAMES CROSSING
 5th Floor Beaufort House
 15 St Botolph Street
 London EC3A 7DT

Project

LOWER THAMES CROSSING
 Drawing title: Figure 6.6
 Representative Viewpoints - Summer View
 Heritage Viewpoint N-(CH)12
 Sheet 2 of 2

Drawn	BB	Date - 12/09/2022	Status	Revision
Checked	DL	Date - 12/09/2022	S8	P01
Approved	CD	Date - 12/09/2022	Application Document No. TR010032/APP/6.2	
Drawing number HE540039-CJV-ELS-SZP_ZZ000000_Z-DR-LV-00208				



P01	S8	12/09/2022	First Issued	BB	DL	CD
Rev	Status	Rev. Date	Purpose of revision	Drawn	Chck'd	Apprv'd

For location see Figure 7.16 - Visual Effects Drawing with Representative Viewpoint Locations

Camera: Canon EOS 6D MkII
 Lens: Canon EF 50mm f/1.8 STM
 Equipment: Manfrotto MA 454 Micro Positioning Plate
 Manfrotto SBH-100 Ball Head

Upper Viewpoint (Summer): N-D06
 Date and Time: 22/06/2021 13:26

FL, Max Aperture: 50mm, 1.75
 Tripod Height: 1.5m
 Viewpoint Ground Height: 17.6m AOD
 Viewpoint Grid Reference: 566179E, 177655N

Distance to Order Limits: 137m
 View Direction: SE
 GPS Accuracy: 5m

Lower Viewpoint (Summer): N-D07
 Date and Time: 22/06/2021 16:22

FL, Max Aperture: 50mm, 1.75
 Tripod Height: 1.5m
 Viewpoint Ground Height: 4.7m AOD
 Viewpoint Grid Reference: 568973E, 177644N

Distance to Order Limits: 20m
 View Direction: W
 GPS Accuracy: 5m



LOWER THAMES CROSSING
 5th Floor Beaufort House
 15 St Botolph Street
 London EC3A 7DT

Project: LOWER THAMES CROSSING
 Drawing title: Figure 6.6
 Representative Viewpoints - Summer View
 Heritage Viewpoint N-D06 & N-D07
 Sheet 1 of 2

Drawn	BB	Date - 12/09/2022	Status	Revision
Checked	DL	Date - 12/09/2022	S8	P01
Approved	CD	Date - 12/09/2022	Application Document No. TR010032/APP/6.2	
Drawing number HE540039-CJV-ELS-SZP_ZZ000000_Z-DR-LV-00217				



Rev	Status	Rev. Date	Purpose of revision	Drawn	Chck'd	Apprv'd
P01	S8	12/09/2022	First Issued	BB	DL	CD

For location see Figure 7.16 - Visual Effects Drawing with Representative Viewpoint Locations

Camera: Canon EOS 6D MkII
 Lens: Canon EF 50mm f/1.8 STM
 Equipment: Manfrotto MA 454 Micro Positioning Plate
 Manfrotto SBH-100 Ball Head

Upper Viewpoint (Summer): N-D06
 Date and Time: 22/06/2021 13:26

FL, Max Aperture: 50mm, 1.75
 Tripod Height: 1.5m
 Viewpoint Ground Height: 17.6m AOD
 Viewpoint Grid Reference: 568179E, 177655N

Distance to Order Limits: 137m
 View Direction (Centre of View): SE
 GPS Accuracy: 5m

Lower Viewpoint (Summer): N-D07
 Date and Time: 22/06/2021 16:22

FL, Max Aperture: 50mm, 1.75
 Tripod Height: 1.5m
 Viewpoint Ground Height: 4.7m AOD
 Viewpoint Grid Reference: 568973E, 177644N

Distance to Order Limits: 20m
 View Direction (Centre of View): W
 GPS Accuracy: 5m



LOWER THAMES CROSSING
 5th Floor Beaufort House
 15 St Botolph Street
 London EC3A 7DT

Project: LOWER THAMES CROSSING
 Drawing title: Figure 6.6
 Representative Viewpoints - Summer View
 Heritage Viewpoint N-D06 & N-D07
 Sheet 2 of 2

Drawn	BB	Date - 12/09/2022	Status	Revision
Checked	DL	Date - 12/09/2022	S8	P01
Approved	CD	Date - 12/09/2022	Application Document No. TR010032/APP/6.2	
Drawing number HE540039-CJV-ELS-SZP_ZZ000000_Z-DR-LV-00218				



PHOTO FRAME INTENTIONALLY BLANK

P01	S8	12/09/2022	First Issued	BB	DL	CD
Rev	Status	Rev. Date	Purpose of revision	Drawn	Chck'd	Apprv'd

For location see Figure 7.16 - Visual Effects Drawing with Representative Viewpoint Locations

Camera: Canon EOS 6D MkII
 Lens: Canon EF 50mm f/1.8 STM
 Equipment: Manfrotto MA 454 Micro Positioning Plate
 Manfrotto SBH-100 Ball Head

Upper Viewpoint (Summer): N-D08
 Date and Time: 22/06/2021 15:11

FL, Max Aperture: 50mm, 1.75
 Tripod Height: 1.5m
 Viewpoint Ground Height: 8.6m AOD
 Viewpoint Grid Reference: 568860E, 176961N

Lower Viewpoint (Summer): N/A
 Date and Time:

Distance to Order Limits: 0m
 View Direction (Centre of View): WSW
 GPS Accuracy: 5m



LOWER THAMES CROSSING
 5th Floor Beaufort House
 15 St Botolph Street
 London EC3A 7DT

Project: LOWER THAMES CROSSING
 Drawing title: Figure 6.6
 Representative Viewpoints - Summer View
 Heritage Viewpoint N-D08
 Sheet 1 of 2

Drawn	BB	Date - 12/09/2022	Status	Revision
Checked	DL	Date - 12/09/2022	S8	P01
Approved	CD	Date - 12/09/2022	Application Document No. TR010032/APP/6.2	
Drawing number HE540039-CJV-ELS-SZP_ZZ000000_Z-DR-LV-00219				

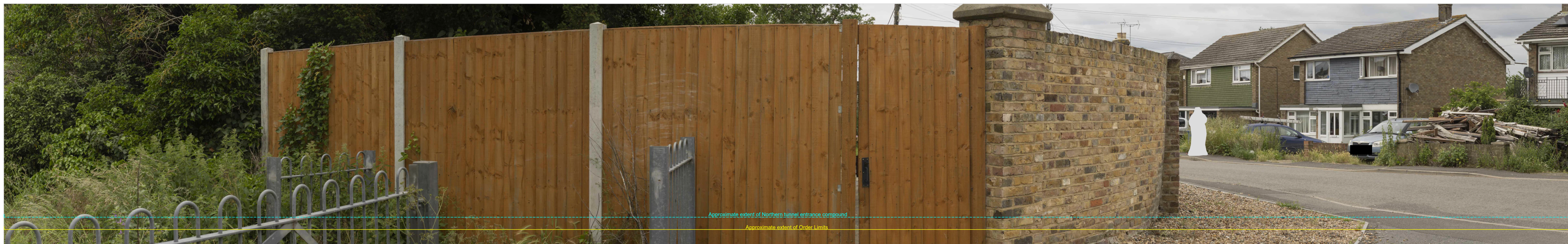


PHOTO FRAME INTENTIONALLY BLANK

For location see Figure 7.16 - Visual Effects Drawing with Representative Viewpoint Locations				Upper Viewpoint (Summer): N-D08 Date and Time: 22/06/2021 15:11				Lower Viewpoint (Summer): N/A Date and Time:				Client 		LOWER THAMES CROSSING 5th Floor Beaufort House 15 St Botolph Street London EC3A 7DT		Project LOWER THAMES CROSSING		Drawing title Figure 6.6 Representative Viewpoints - Summer View Heritage Viewpoint N-D08 Sheet 2 of 2		Drawn BB Checked DL Approved CD		Date - 12/09/2022 Date - 12/09/2022 Date - 12/09/2022		Status S8		Revision P01	
Camera: Canon EOS 6D MkII Lens: Canon EF 50mm f/1.8 STM Equipment: Manfrotto MA 454 Micro Positioning Plate Manfrotto SBH-100 Ball Head				FL, Max Aperture: 50mm, 1.75 Tripod Height: 1.5m Viewpoint Ground Height: 8.6m AOD Viewpoint Grid Reference: 568860E, 176961N				Distance to Order Limits: 0m View Direction (Centre of View): WSW GPS Accuracy: 5m				FL, Max Aperture: Tripod Height: Viewpoint Ground Height: Viewpoint Grid Reference:				Distance to Order Limits: View Direction (Centre of View): GPS Accuracy:		Application Document No. TR010032/APP/6.2		Drawing number HE540039-CJV-ELS-SZP_ZZ000000_Z-DR-LV-00220							
P01 S8 12/09/2022 First Issued	BB	DL	CD																								
Rev	Status	Rev. Date	Purpose of revision	Drawn	Chck'd	Apprv'd																					

If you need help accessing this or any other National Highways information, please call **0300 123 5000** and we will help you.

© Crown copyright 2022.

You may re-use this information (not including logos) free of charge in any format or medium, under the terms of the Open Government Licence. To view this licence:

visit www.nationalarchives.gov.uk/doc/open-government-licence/

write to the **Information Policy Team, The National Archives, Kew, London TW9 4DU**, or email psi@nationalarchives.gsi.gov.uk.

Mapping (where present): © Crown copyright and database rights 2022 OS 100030649. You are permitted to use this data solely to enable you to respond to, or interact with, the organisation that provided you with the data. You are not permitted to copy, sub-license, distribute or sell any of this data to third parties in any form.

If you have any enquiries about this publication email info@nationalhighways.co.uk or call **0300 123 5000***.

*Calls to 03 numbers cost no more than a national rate call to an 01 or 02 number and must count towards any inclusive minutes in the same way as 01 and 02 calls. These rules apply to calls from any type of line including mobile, BT, other fixed line or payphone. Calls may be recorded or monitored.

Printed on paper from well-managed forests and other controlled sources when issued directly by National Highways.

Registered office Bridge House, 1 Walnut Tree Close, Guildford GU1 4LZ

National Highways Company Limited registered in England and Wales number 09346363